

INT69[®] Control Module



INT69

INT69 Control Module

Application:

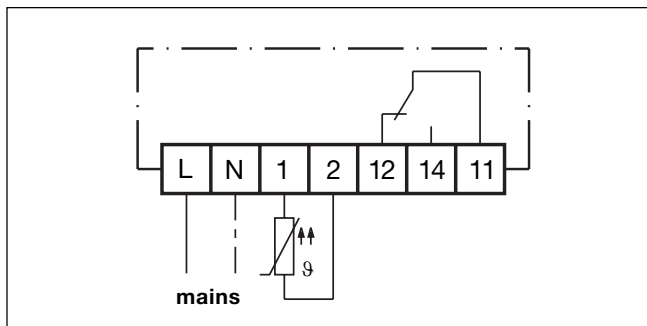
Due to its robust and compact construction and the high ambient temperature compatibility, the INT69 control module is suitable for installation in

the terminal box of electric motors. The module is highly reliable and is in use in millions of installations world-wide.

Functional description:

Up to 9 PTC-sensors to DIN 44081/082 with different nominal response temperatures can be connected in series to the measuring circuit input. Hence it is possible to monitor one or several motor drive units (e.g. motor windings, gear drives, shaft bearings) for thermal overload with only one INT69 motor protector. If the temperature in one of the areas monitored exceeds the nominal response temperature of the respective PTC-sensor, the sensor resistance in-

creases and the INT69 motor protection module switches the motor contactor off. The module resets when the temperature drops below the response temperature by approx. 3 K. The output relay provides a potential-free change-over contact and is energized as long as the nominal response temperature is not exceeded. This results in an additional self-monitoring function, since the device also trips on PTC or lead open circuit.

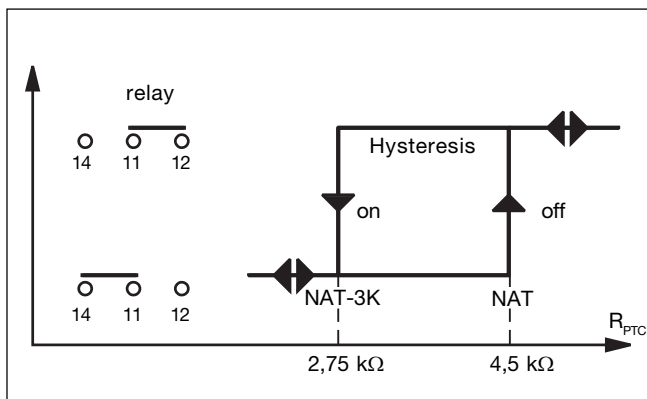


Connection diagram



The unit must be connected by trained electrical personnel. All valid standards and instructions for installing electri-

cal components must be observed. Maximum values for supply voltage of this unit may not be exceeded.



Switching hysteresis

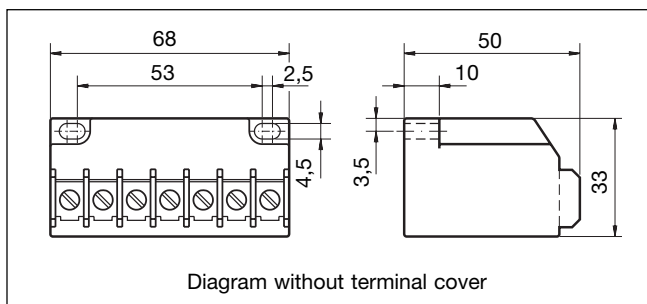


Diagram without terminal cover

Dimensions in mm

Technical data:

Supply voltage	AC 40...60 Hz 200...240 V ±10%
Internal power consumpt.	3 VA
Admissible ambient temp.	-30...+70 °C
Measuring circuit	
- Type	PTC to DIN 44081/082
- Number of sensors	1 to 9 in series
- R _{25, all}	<1800 Ω
Relay output	AC 250 V, max. 6 A, 300 VA ind.
Service life	approx. 1 x 10 ⁶ switching cycles
Protection class to EN 60529	with terminal cover: IP20 without terminal cover: IP00
Mounting	base-mounted
Dimensions	68 x 33 x 50 mm
Housing	PA6 GF30
Weight	150 g
Part-No.	52 A 120 S10

Subject to technical modifications.